

INDIAN CAMP EXPANSION KITTITAS COUNTY, WA PARCELS 937235 & 377535 SECTIONS 22 & 27 TOWNSHIP 21 N RANGE 15 E

PROJECT CONTACT INFORMATION

Owner:
Washington State Department
of Natural Resources
Southeast Region
(509) 925-8510

Project Manager:
Stephanie Margheim
stephanie.margheim@dnr.wa.gov
(509) 925-0984

Planner:
L. Raine Frost
raine.frost@dnr.wa.gov
(360) 902-1769

Civil Engineer:
Tom Szymoniak
tom.szymoniak@dnr.wa.gov
(360) 902-1215

PROPERTY INFORMATION

Parcel # 937235 & 377535
Sections: 22 & 27
Township: 21 North
Range: 15 East

Kittitas County Zoning:
Commercial Forest District

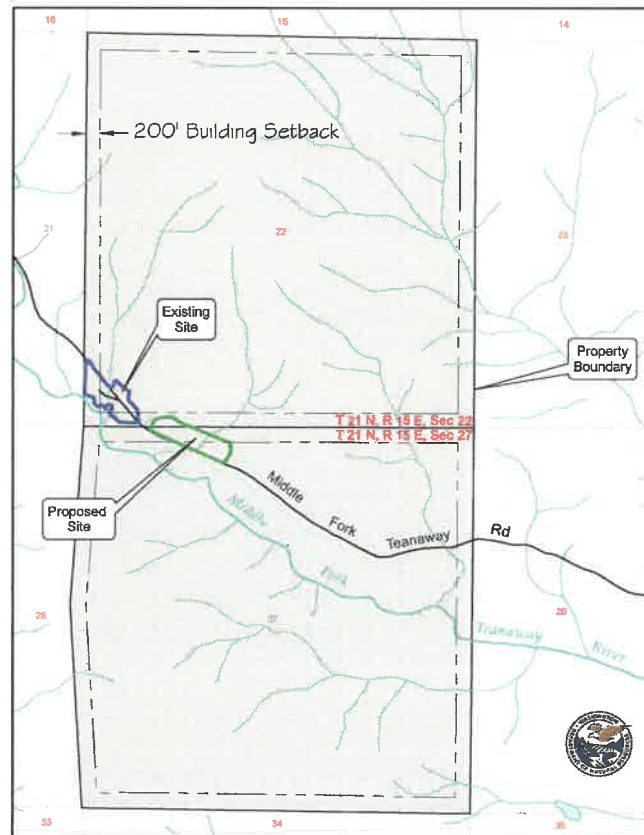
DNR Region: Southeast

SUBMITTAL INFORMATION

Submitted to:
Kittitas County Community
Development Services

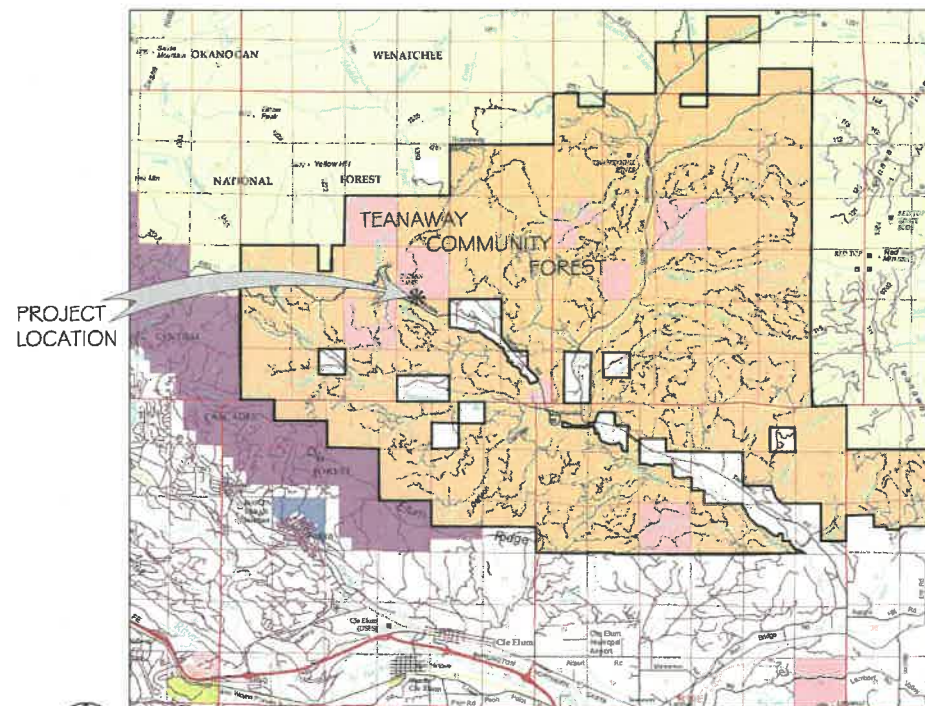
Submitted by:
Washington State Department of
Natural Resources

Submittal Date: 12/02/2019



PROJECT AREA LOCATION WITHIN SECTION BOUNDARIES

Half Size 11x17



PROJECT LOCATION

VICINITY MAP

Not For Construction

SHEET INDEX

- G O. 1 Cover Sheet
- L O. 1 Site Layout Plan
- L O. 2 Landscape Details

GRADING QUANTITIES

Total disturbed area: 3.0 acres

Cut & Fill Volumes:

Total Cut: 4,330 cubic yards
Total Fill: 4,226 cubic yards
Net Import: 104 cubic yards

DESIGN BY:	NO.	REVISION DESCRIPTION	DATE	BY	PROPERTY INFORMATION
DJL / LRMF					PARCELS: 937235 & 377535
DRAWN BY:					SECTION(S): 22 & 27
LRMF					TOWNSHIP: 21 N
CHECKED BY:					RANGE: 15 E
DJL / SM					DNR REGION: Southeast
DATE:					
18 November 2019	1	Conditional Use Permit Submittal		SM	



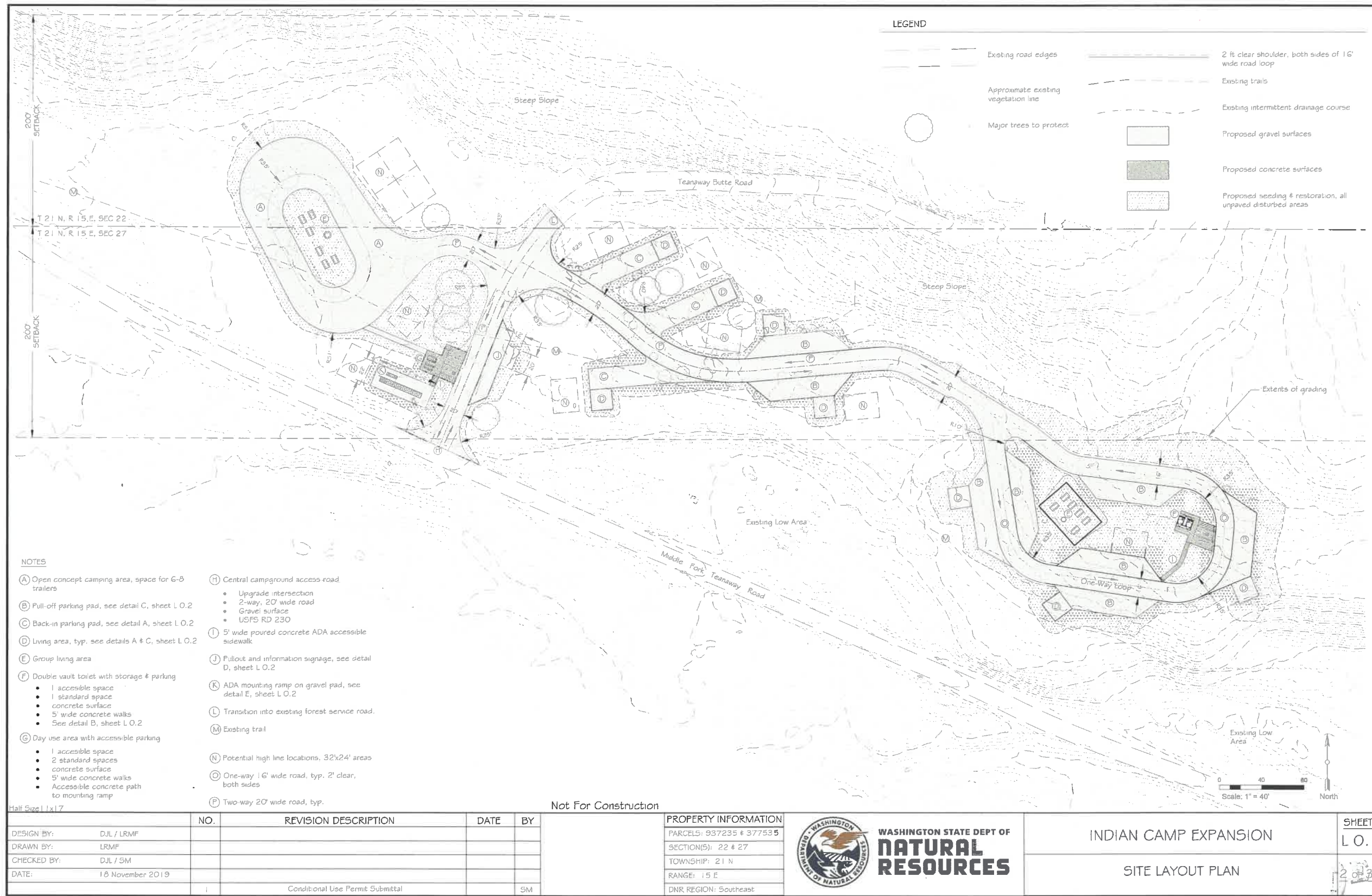
INDIAN CAMP EXPANSION

COVER SHEET

SHEET
G O. 1

1 of 3

RECEIVED
DEC 17 2019
Kittitas Co. CDS



NOTES

- (A) Open concept camping area, space for G-B trailers
- (B) Pull-off parking pad, see detail C, sheet L.O.2
- (C) Back-in parking pad, see detail A, sheet L.O.2
- (D) Living area, typ. see details A & C, sheet L.O.2
- (E) Group living area
- (F) Double vault toilet with storage & parking
 - 1 accessible space
 - 1 standard space
 - concrete surface
 - 5' wide concrete walks
 - See detail B, sheet L.O.2
- (G) Day use area with accessible parking
 - 1 accessible space
 - 2 standard spaces
 - concrete surface
 - 5' wide concrete walks
 - Accessible concrete path to mounting ramp
- (H) Central campground access road
 - Upgrade intersection
 - 2-way, 20' wide road
 - Gravel surface
 - USFS RD 230
- (I) 5' wide poured concrete ADA accessible sidewalk
- (J) Pullout and information signage, see detail D, sheet L.O.2
- (K) ADA mounting ramp on gravel pad, see detail E, sheet L.O.2
- (L) Transition into existing forest service road.
- (M) Existing trail
- (N) Potential high line locations, 32'x24' areas
- (O) One-way 16' wide road, typ. 2' clear, both sides
- (P) Two-way 20' wide road, typ.

Half Size 11x17

Not For Construction

NO.	REVISION DESCRIPTION	DATE	BY
1	Conditional Use Permit Submittal		SM

PROPERTY INFORMATION
PARCELS: 937235 & 377535
SECTION(S): 22 & 27
TOWNSHIP: 21 N
RANGE: 15 E
DNR REGION: Southeast



WASHINGTON STATE DEPT OF NATURAL RESOURCES

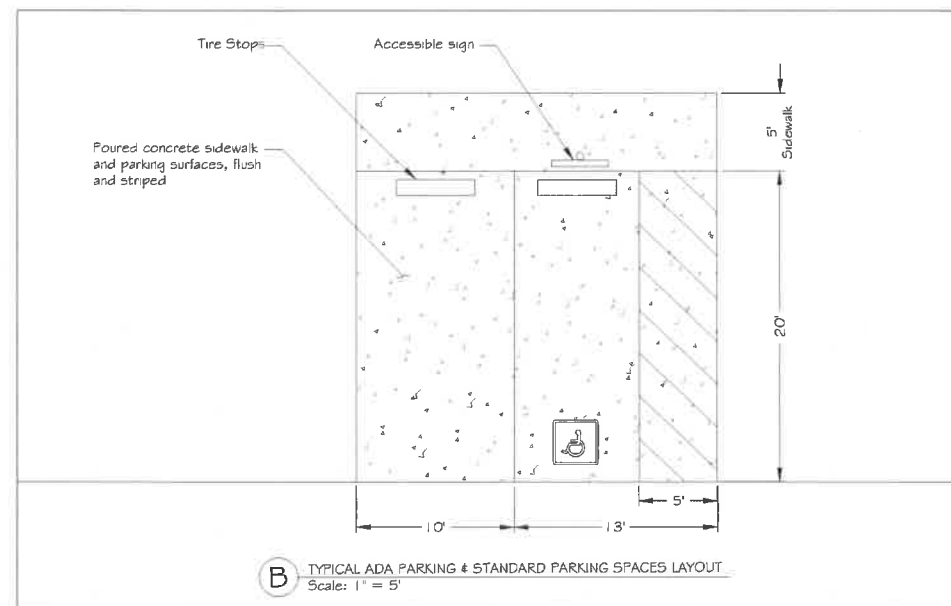
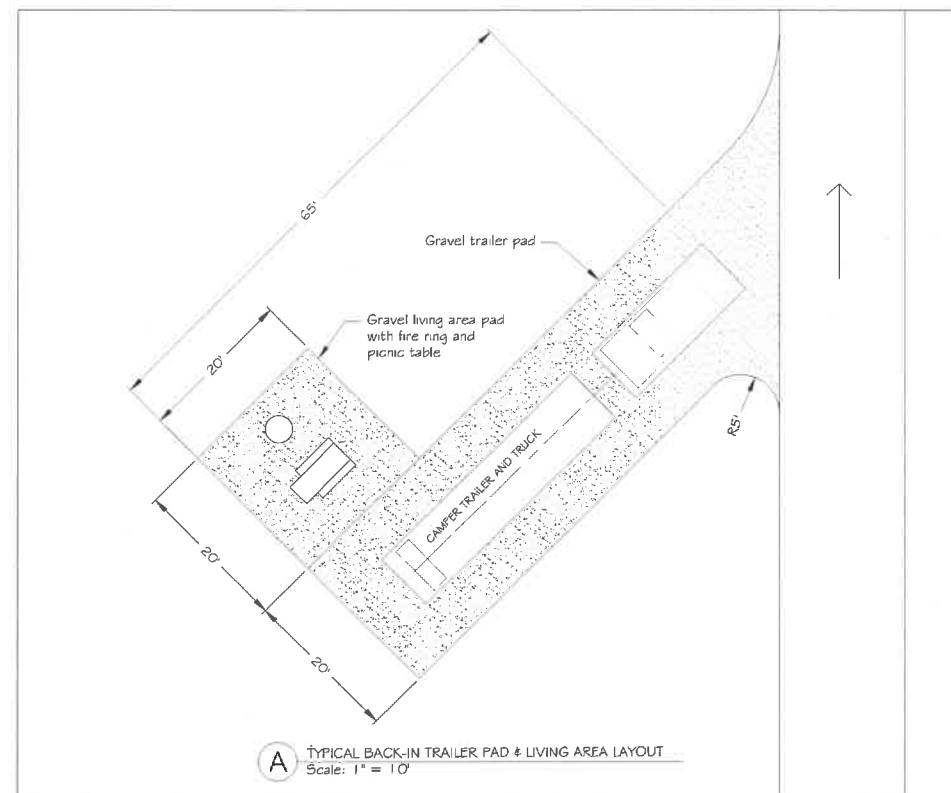
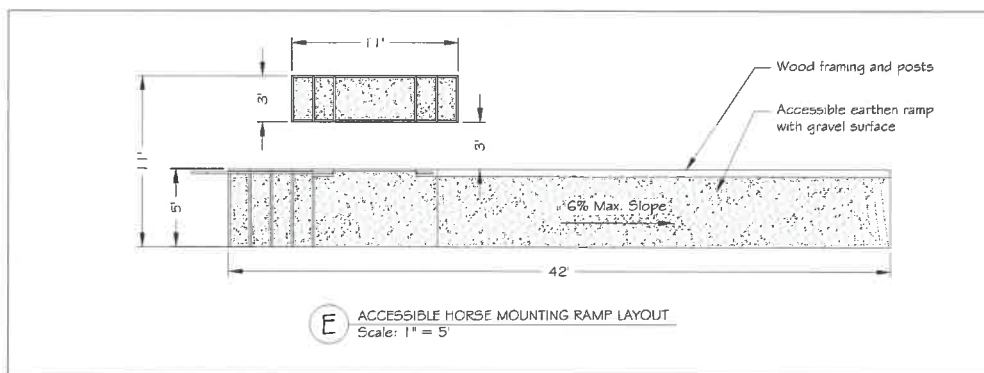
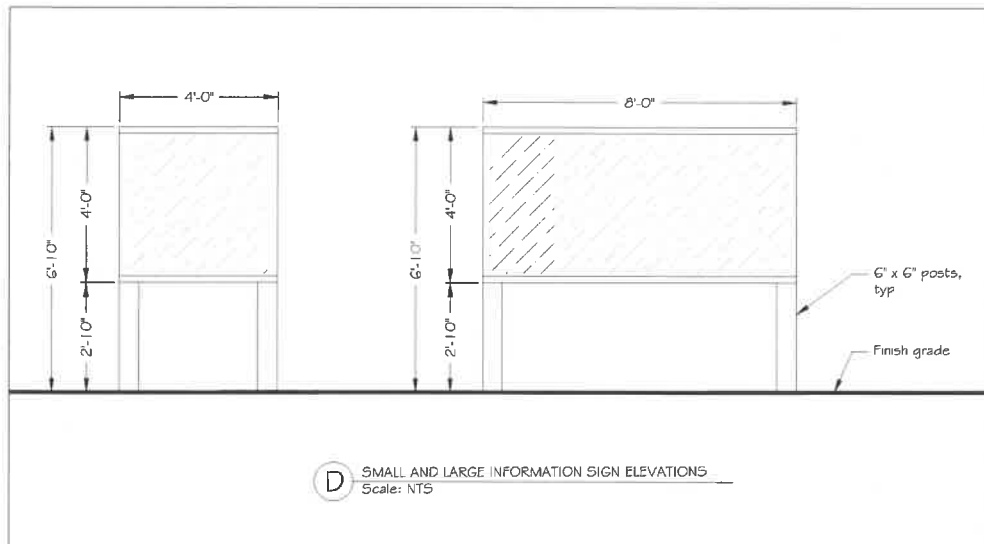
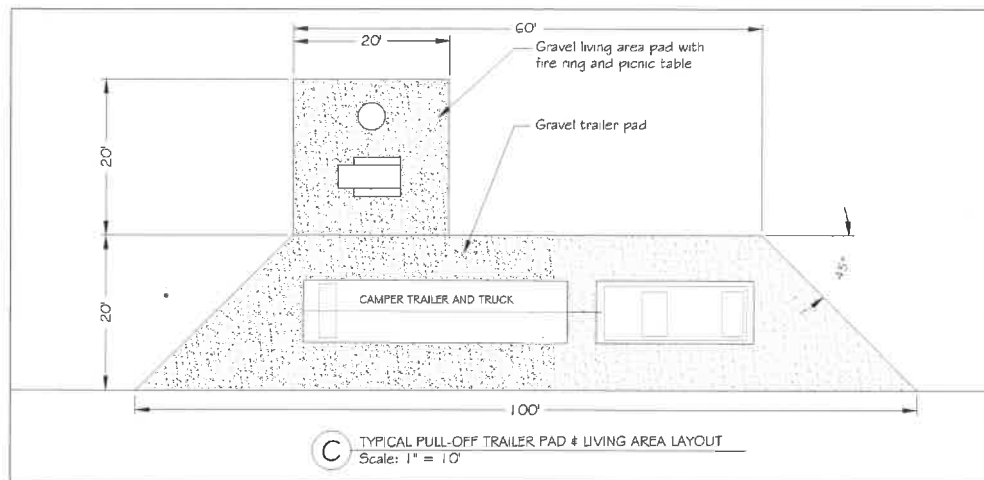
INDIAN CAMP EXPANSION

SITE LAYOUT PLAN

SHEET L.O.1

2 of 3

RECEIVED
DEC 17 2019
Kittitas Co. CDS



Half Size 11x17

Not For Construction

DESIGN BY:	DJL / LRMF	NO.	REVISION DESCRIPTION	DATE	BY
DRAWN BY:	LRMF				
CHECKED BY:	DJL / SM				
DATE:	18 November 2019				
		1	Conditional Use Permit Submittal		SM

PROPERTY INFORMATION
PARCELS: 937235 & 377535
SECTION(S): 22 & 27
TOWNSHIP: 21 N
RANGE: 15 E
DNR REGION: Southeast



WASHINGTON STATE DEPT OF NATURAL RESOURCES

INDIAN CAMP EXPANSION

LANDSCAPE DETAILS

SHEET
L.O.2

RECEIVED
DEC 17 2019

Kittitas Co. CDS